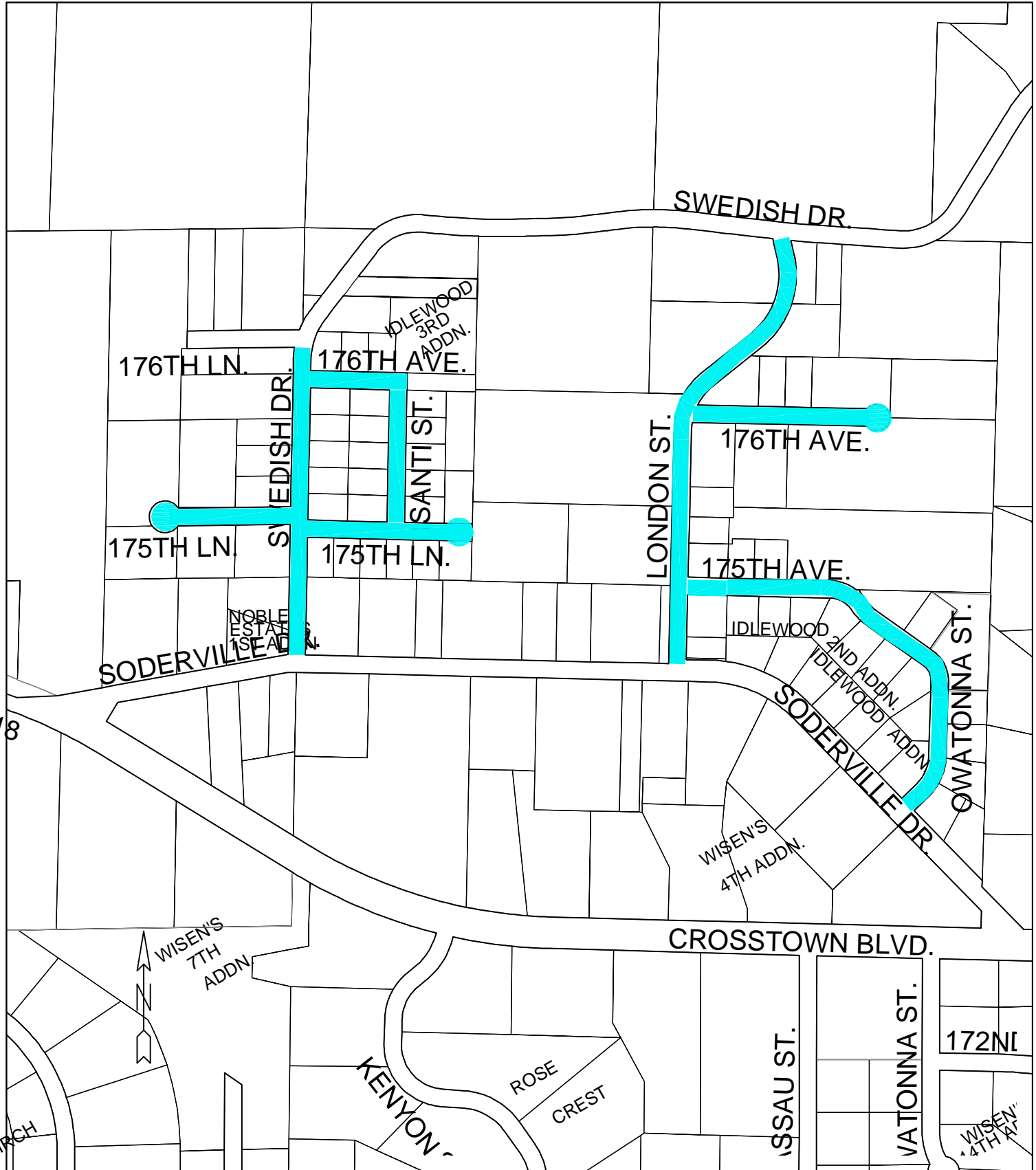


— BITUMINOUS OVERLAY EXPANSION

<p>Sheet Title: CITY OF HAM LAKE BITUMINOUS OVERLAY</p>	<p>Date 4/1/24</p>	<p>Scale 1"=4,000'</p>
<p>Project: OVERALL 2024 ADDITIONAL BITUMINOUS OVERLAY LOCATIONS</p>	<p>RFC ENGINEERING, INC. Consulting Engineers 13635 Johnson Street Ham Lake, MN 55304 Telephone (763) 862-8000 Fax (763) 862-8042</p>	



Sheet Title:
CITY OF HAM LAKE 2024 BITUMINOUS OVERLAY

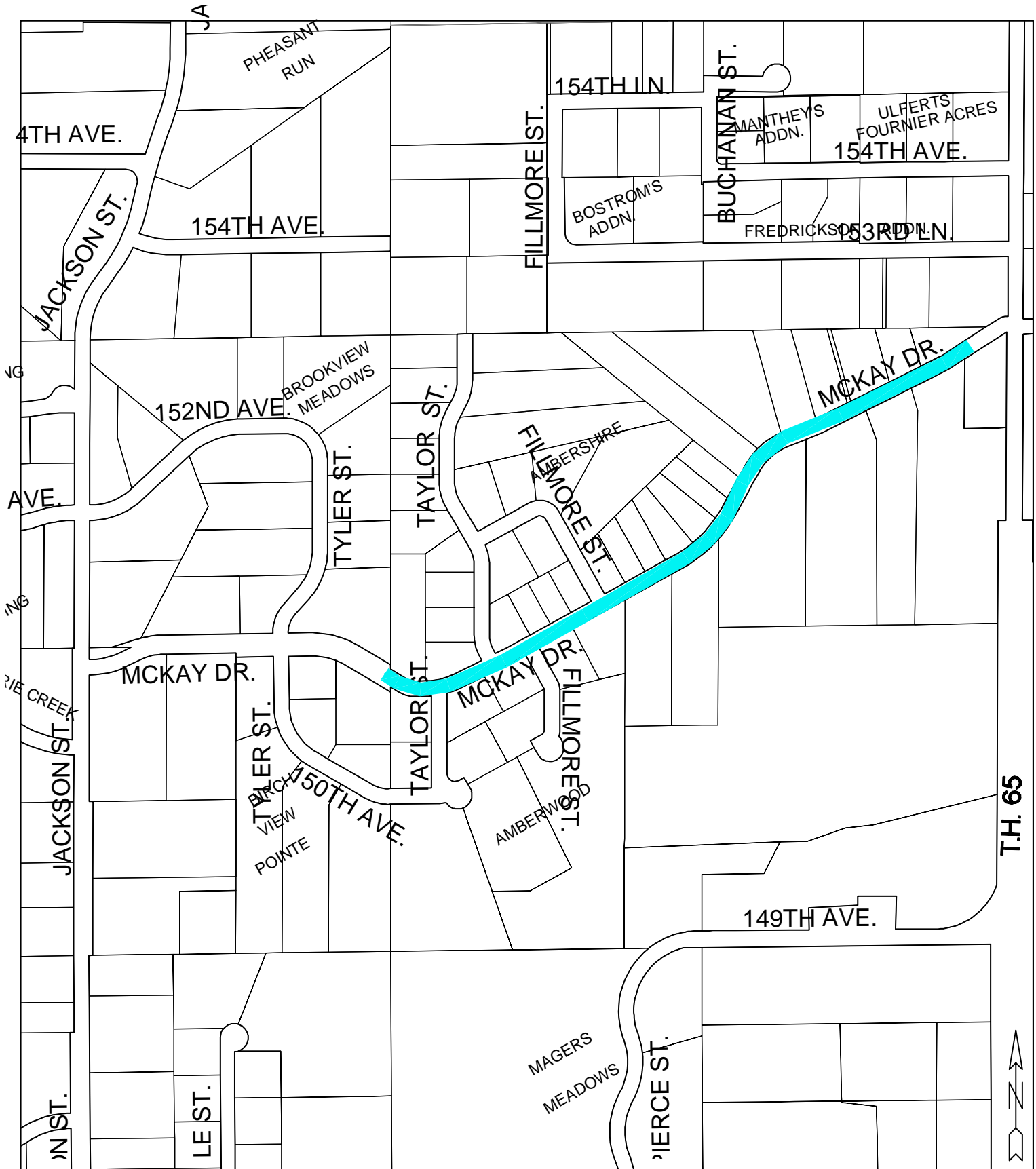
Locations:
IDLEWOOD 1ST ADDITION AND IDLEWOOD 3RD ADDITION

Date
4/1/24

Scale
1" = 500'

RFC ENGINEERING, INC.
Consulting Engineers

13635 Johnson Street
Ham Lake, MN 55304
Telephone (763) 862-8000
Fax (763) 862-8042



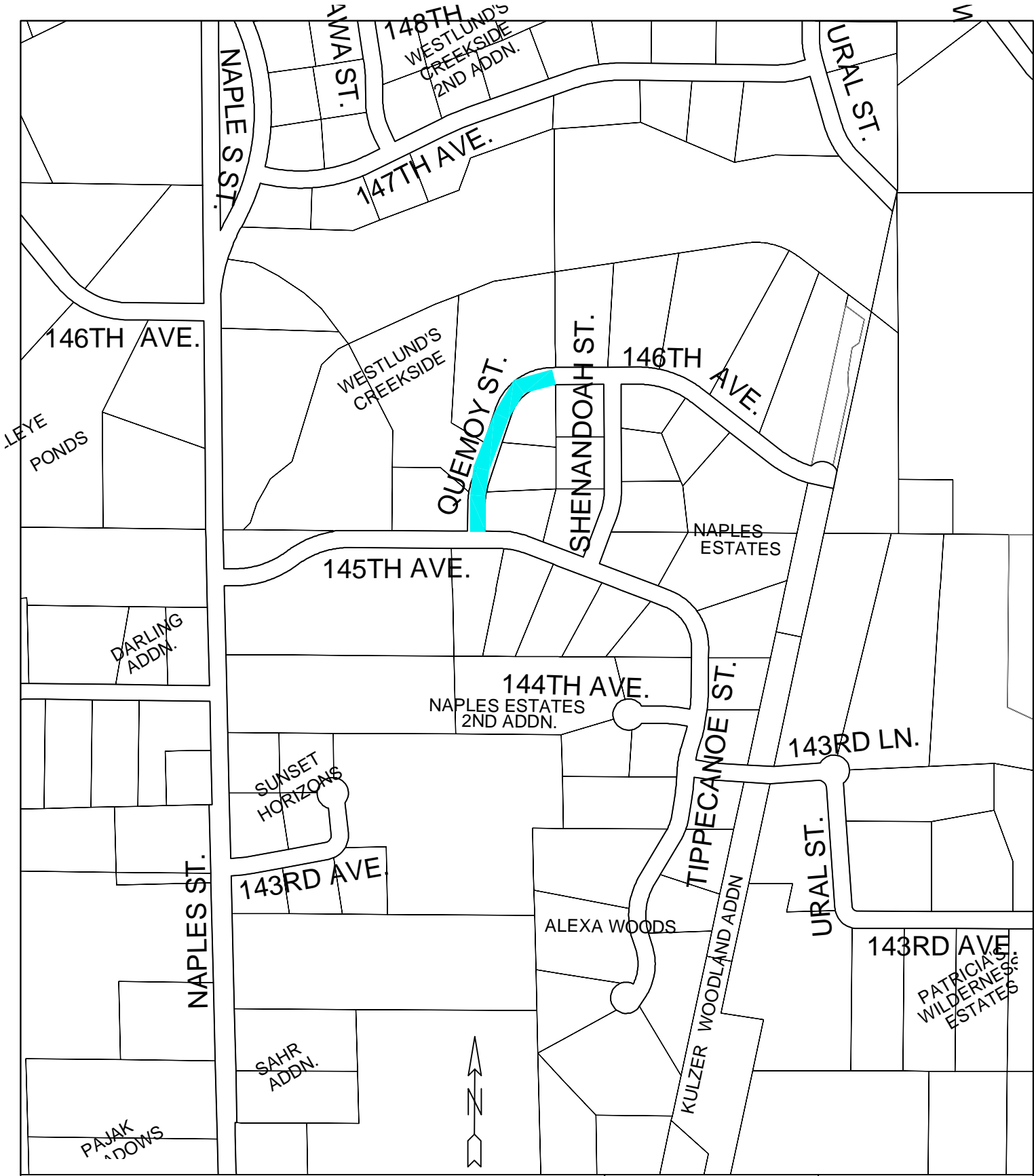
Sheet Title:
CITY OF HAM LAKE 2024 BITUMINOUS OVERLAY

Date
3/14/24

Scale
1" = 500'

Locations:
MCKAY DRIVE NE
(606 FT. EAST OF JACKSON ST. AND
158 FT. WEST OF CENTRAL AVE.)

RFC ENGINEERING, INC.
Consulting Engineers
13635 Johnson Street
Ham Lake, MN 55304
Telephone (763) 862-8000
Fax (763) 862-8042



Sheet Title:
CITY OF HAM LAKE 2024 BITUMINOUS OVERLAY

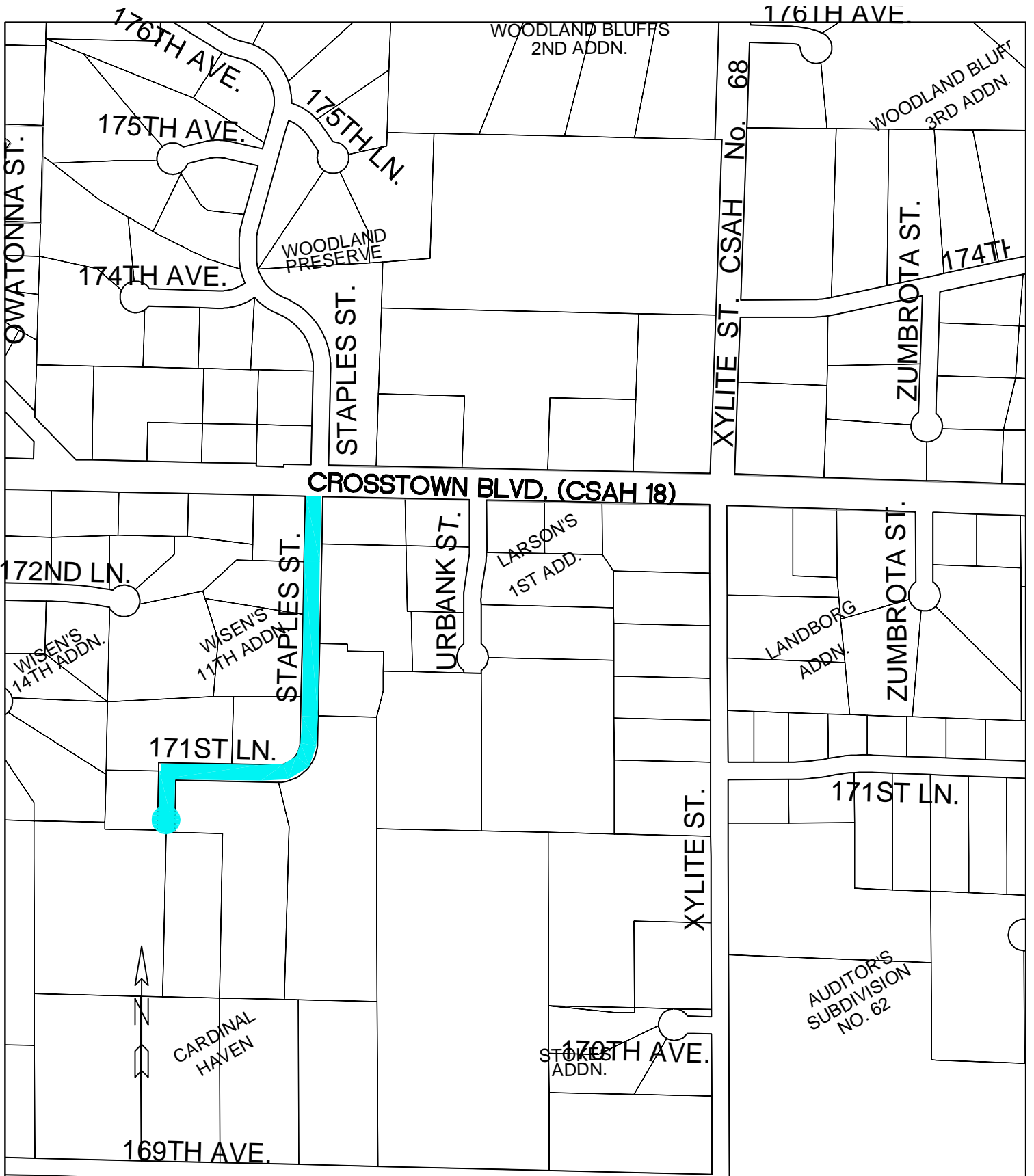
Date
3/14/24

Scale
1" = 500'

Locations:
WESTLUND'S CREEKSIDE

RFC ENGINEERING, INC.
Consulting Engineers

13635 Johnson Street
Ham Lake, MN 55304
Telephone (763) 862-8000
Fax (763) 862-8042



Sheet Title:
CITY OF HAM LAKE 2024 BITUMINOUS OVERLAY

Date
3/14/24

Scale
1" = 500'

Locations:
WISEN'S 11TH ADDITION

RFC ENGINEERING, INC.
Consulting Engineers
13635 Johnson Street
Ham Lake, MN 55304
Telephone (763) 862-8000
Fax (763) 862-8042